

THE SOHO HOTEL - Screening Room Two

Screening Room Two is located on the lower ground floor of the hotel, conveniently situated adjacent to the event rooms. It can easily become the perfect location to hold a seminar or hold your own private screening event. It has 45 deep cowhide and leather armchairs luxuriously designed by Poltrona Frau.



Room Specifications & Rates

SEATS - 45

SCREEN - 6 x 3m

RATES - £300 per hour

Additional fee £120 for 3D screenings
(2 hour minimum for all screenings)

VIDEO EQUIPMENT

BARCO DP4K-19B, Digital Projector; D Cinema Compliant 2K & 4K (4,096 x 2,160)

DoReMi DCP2k4 Integrated media block and server

Kramer VP-747 Presentation Switcher

Denon DN-500BD Blu-ray Player

Picturall Twin Media Server

Digi Beta, Sony J 30

DVD player; Pioneer Multi Region

Sky HD

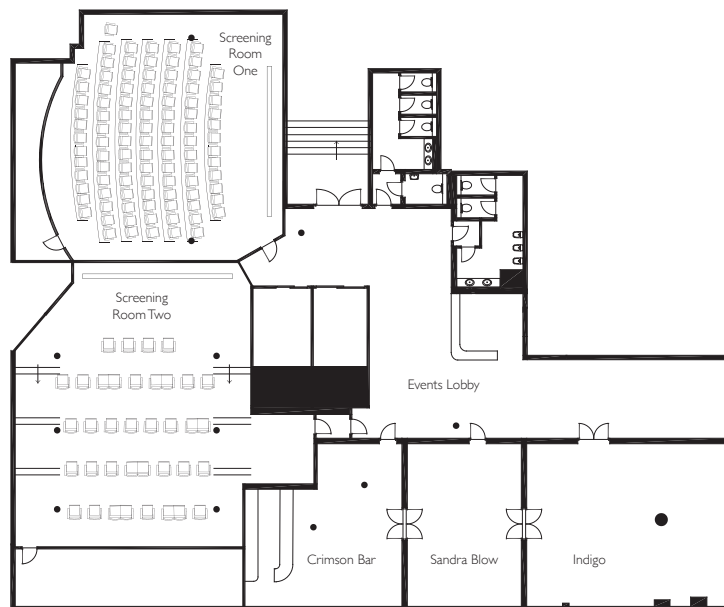
MAC & PC, Graphics

QSC Touchmix 30 mixer

Pulse CD / MP3 Player

2 HDMI connections at stage (Connect Xbox, Playstation etc includes 5.1 sound)

VGA connection at stage for MAC & PC



SOUND EQUIPMENT

Dolby CP750 Cinema Processor

Datasat AP20 Audio Processor

QSYS Core Integrated Processor

QSC DPA8.4Q 8 Channel amplifier

QSC DPA4.2 4 Channel amplifier

QSC Unified Series Core with Local I/O Channels

Three stage speakers JBL3678

Eight Martin Audio surround speakers

Sub bass KCS215

Acoustically transparent masking

Sound Formats Supported

Dolby 7.1, 5.1

Microphones, wired and wireless, hand held, and lapel

Stage Connectivity

XLR like sockets (adaptor to 3.5mm for PC)

Line out for recording purposes

EQUIPMENT

Lectern and microphone

£100 per day

Clip radio microphone

£65 per day

Hand held radio microphone

£65 per day

Table-top microphone

£65 per day

Lost or broken 3D glasses

£20 per pair

Audio Distribution Board

£120 per day

Solid State Audio Recorder

£200 per day

Video Format Decks:

DVCAM, HDDV, XDCAM

£300 per day

HDCAM SR/ D5

£550 per day

Hard wired internet access

£100 per day

WiFi complimentary

Additional technical support

£450 per day

All prices are inclusive of VAT

MENU

Fish and chip cones

£5.00

Mini hot dogs

£5.00

Mini cheese burgers

£5.00

Popcorn

£4.00

Selection of crisps (40g)

£1.50

Selection of sweets

£4.00

Selection of nuts

£4.00

Pop by Pommery (200ml)

£16.50

Selection of bottled beers (330ml)

£6.00

Evian water (500ml)

£3.50

Selection of bottled juices (250ml)

£4.00

Selection of soft drinks (330ml)

£3.75

Classic POP

£7.00

Bellini POP

£7.00

Strawberry and Mint POP

£4.00

Apple and Elderflower POP

£4.00

Selection of mini ice cream tubs (100ml)

£4.00